



TRI-COUNTY
Engineering Consultants

OWNER / CLIENT
ORCHARD LAKE VILLAGE
GERRY McCALLUM
DIRECTOR OF CITY SERVICES
(248) 682-2400

PROJECT START - END
2017 - ONGOING

PROJECT COST
N/A

KEY PERSONNEL
SERMED K. SAIF, PE

PROJECT NO.
OL17001



MUNICIPAL



48701 Hayes Road
Shelby Twp, MI 48315

www.Tri-CountyEng.com

PROJECT PROFILE

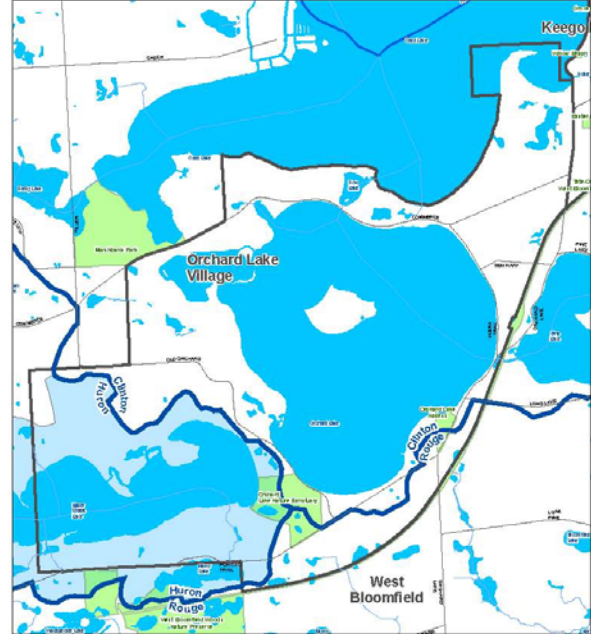
NPDES PHASE II MS4 PERMITTING ASSISTANCE CITY OF ORCHARD LAKE VILLAGE, OAKLAND COUNTY, MICHIGAN

BACKGROUND

Provided assistance to the Village with permit compliance for the Michigan Department of Environmental Quality's (MDEQ) National Pollutant Discharge Elimination System (NPDES) Phase II Municipal Separate Storm Sewer Systems (MS4) Permit, Storm Water Management Program (SWMP) Plan.

LOCATION

The Village is located within the Clinton River, Huron and Rouge Watersheds.



SCOPE

- Watershed Participation
- Annual Progress Report
- MS4 Survey and Mapping
- Storm Water Ordinance
- Pollution Prevention
- Storm Water Pollution Prevention Initiative (SWPPI)
- Illicit Discharge Elimination Program (IDEP)

SPECIAL FEATURES

Worked closely with the Village to track and manage annual related activities such as:

- Catch Basin Inspections and Cleaning Programs
- Storm Sewer Inspections and Cleaning Programs
- Sanitary Sewer Inspections and Cleaning Programs
- Street and Parking Lot Sweeping Programs
- DPW OSDS, Fleet, Salt Storage, Facilities Maintenance Program
- Household Hazardous Waste Collection Program
- ARC Participation
- Riparian Corridors Inspections
- Swale Maintenance
- Weed Harvesting and Herbiciding
- ROW / City Facilities Weed Control
- Water Quality Monitoring
- Training/Inspection Programs for Staff
- Public Education Program (PEP) Materials
- Winter Road Management
- Lawn Maintenance
- Dry Weather Outfall Screening
- Drainage System Map
- Progress Reports
- SWPPP Inspections / Report
- PIPP Report
- Sampling Program (Upper Straits Lake)

